

## Anticipating Threats to U.S. Ports

### CHALLENGE:

Intelligence analysts who are tasked with support to the security of U.S. ports must monitor and make sense of suspicious activities that could be associated with precursor actions to a terrorist attack. These analysts sought a more effective way to identify and understand the potential significance of observed activities within the context of other observations.



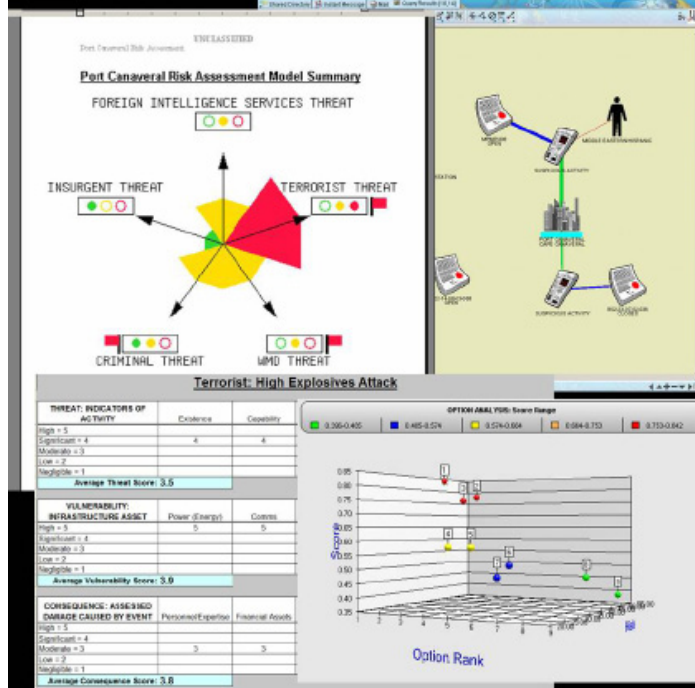
Structured argumentation and options modeling tools combined with an innovative analytic approach provides analysts with insights that enable defensible intelligent findings.

### SOLUTION:

Eastport Analytics collaborated with the analysts to uncover their needs, conceptualize possible solutions, and develop a capability that would meet their needs. Leveraging Eastport's innovative analytic approach and tools, the team rapidly developed a novel model-driven solution that guides analysts in the application of a variety of analytic methodologies and support technologies. The

solution made use of templates and model structures that hierarchically organize the considerations used to assess whether a threat is imminent. Structured argumentation and options modeling tools served to define and capture the process of analysis from problem representation, through assumptions, to conclusions. These tools also served to remind analysts of the full spectrum of factors that they should consider and allowed them to drill down along the

# Case Story Case Story



**A data-driven analytic approach provides analysts with the tools to transform data into valuable mission-supporting intelligence.**

component lines of reasoning to inspect associated supporting evidence. Visualization and link analysis capabilities engaged the analysts' ability to discern key influencing factors and important relationships and trends.

**Advanced technologies enable analysts to exploit data and graphically simulate meaningful scenarios, view interconnections in data, and identify high impact findings.**

The solution also provided the analysts with a consistent method to improve their analytic processes and decision making capabilities, resulting in a more effective means to meet their mission objectives

## IMPACT:

Use of the decision analytics solution enabled the analysts to identify the most likely scenarios for attack at specific U.S. ports. The solution provided the analysts with the ability to more quickly understand the significance of suspicious activities within a broad context of other current and previous activities and trends.

## ABOUT EASTPORT:

Eastport Analytics provides innovative analytic solutions that transform information into vital insights and enable our customers to make more informed and smarter business decisions. We blend sophisticated technology with agile approaches to deliver actionable insights that improve operational performance and positively impact mission objectives.



**eastportanalytics**

*Delivering actionable insights for better-informed decisions*

**703-600-1900**

**[www.eastportanalytics.com](http://www.eastportanalytics.com)**

1700 N. Moore Street, Suite 2100  
Arlington VA 22209